

CONTENTS

Ideal Home
and Garden

89

LIFESTYLE

- 90 **IDEAL LIVING**
Kanpur's French connection
- 98 **IDEAL GETAWAY**
A peek into the most fashionable and finest suites
- 102 **NOUVEAU ARRIVAL**
Bengaluru's own Earth&Essence
- 106 **FOOD FETISH**
Knocking the doors of Biryani Central
- 110 **DINE IN STYLE**
Delicacies at the Dragonfly
- 112 **STORE MAP**

94



104



110



100



101



To **Subscribe**
turn to page

69

Nouveau Arrival

NATURE Beckons

Discover peace and harmony in consciously crafted homes at Earth & Essence that will allow you to grow and live the way you're meant to

IMPRESSIONS: BENOY SEBASTIAN





'Live a life that respects all the connections in your life. Connections with nature and with the ones you love.' To honour the wise words - the Earth & Essence environs and homes are placed in a quiet enclave just off the Kempegowda International Airport Road, and is set across 16.8 acres, divided into four phases of development. The homes at Earth & Essence are built around community spaces that build bonding and togetherness. Homes that are open, airy and bright.

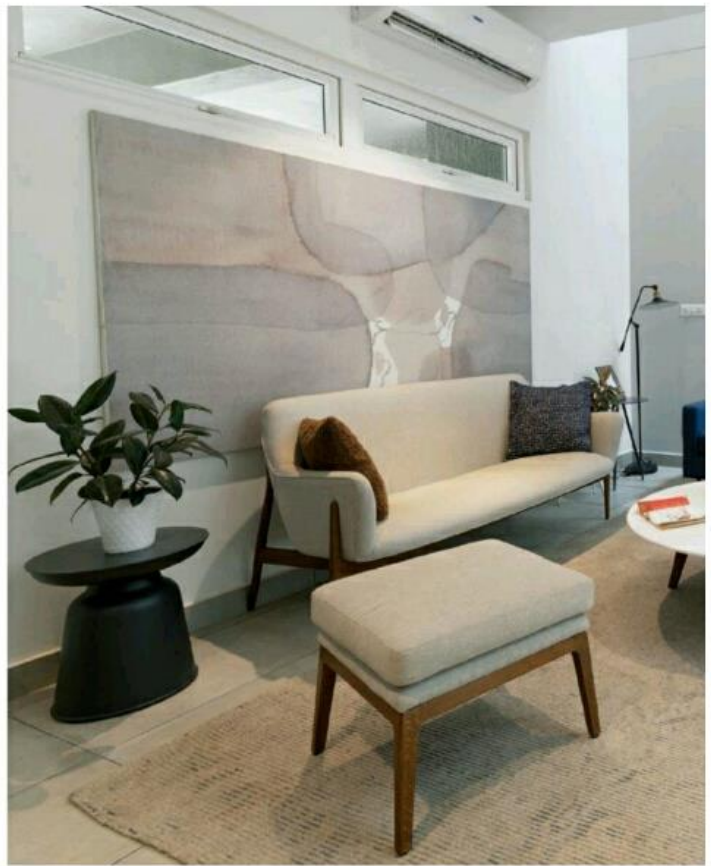
The touch of green and the joy it brings is carefully brought into each home through open skylights, courtyards, and alfresco dining areas. Each home is built in levels - it ensures complete privacy and offers green views from various rooms. Apart from the greenery that will be in the home and around it, there is a rooftop terrace that can serve as a garden space. Each home is large enough to be called a villa. The focal point of every home is the open-to-sky courtyard, which will give unique views of the beauty of the nature outside.

As for the location - Earth & Essence is located in the upcoming hub of North Bengaluru, which is a short and pleasant drive off Airport Road - a neighbourhood where there are no looming skyscrapers, just wide open spaces. [799](#)

“

“THE OLD WAY OF LIVING IN BENGALURU SAW INDEPENDENT DWELLINGS BEDECKED WITH CENTRAL COURTYARDS AND BACKYARDS. WE ARE TRYING TO BRING THAT BACK THROUGH A CONTEMPORARY TAKE WITH NATURE-INSPIRED POCKETS INSIDE NEW-AGE HOMES THAT GIVE BUYERS A LIVING SPACE NESTLED IN GREENERY.”

*Akshay Dewani,
CEO-Residential and Partner,
Assetz Property Group*



THE FOCAL POINT OF EVERY HOME IS THE OPEN-TO-SKY COURTYARD, WHICH WILL GIVE UNIQUE VIEWS OF THE BEAUTY OF THE NATURE OUTSIDE.



Nouveau Arrival

THE FACTS

The Project: Earth & Essence

The Builder: Assetz Property Group

Location: Off Kempegowda

International Airport Road, Jala
Hobli, Hosahalli, North Bengaluru

